






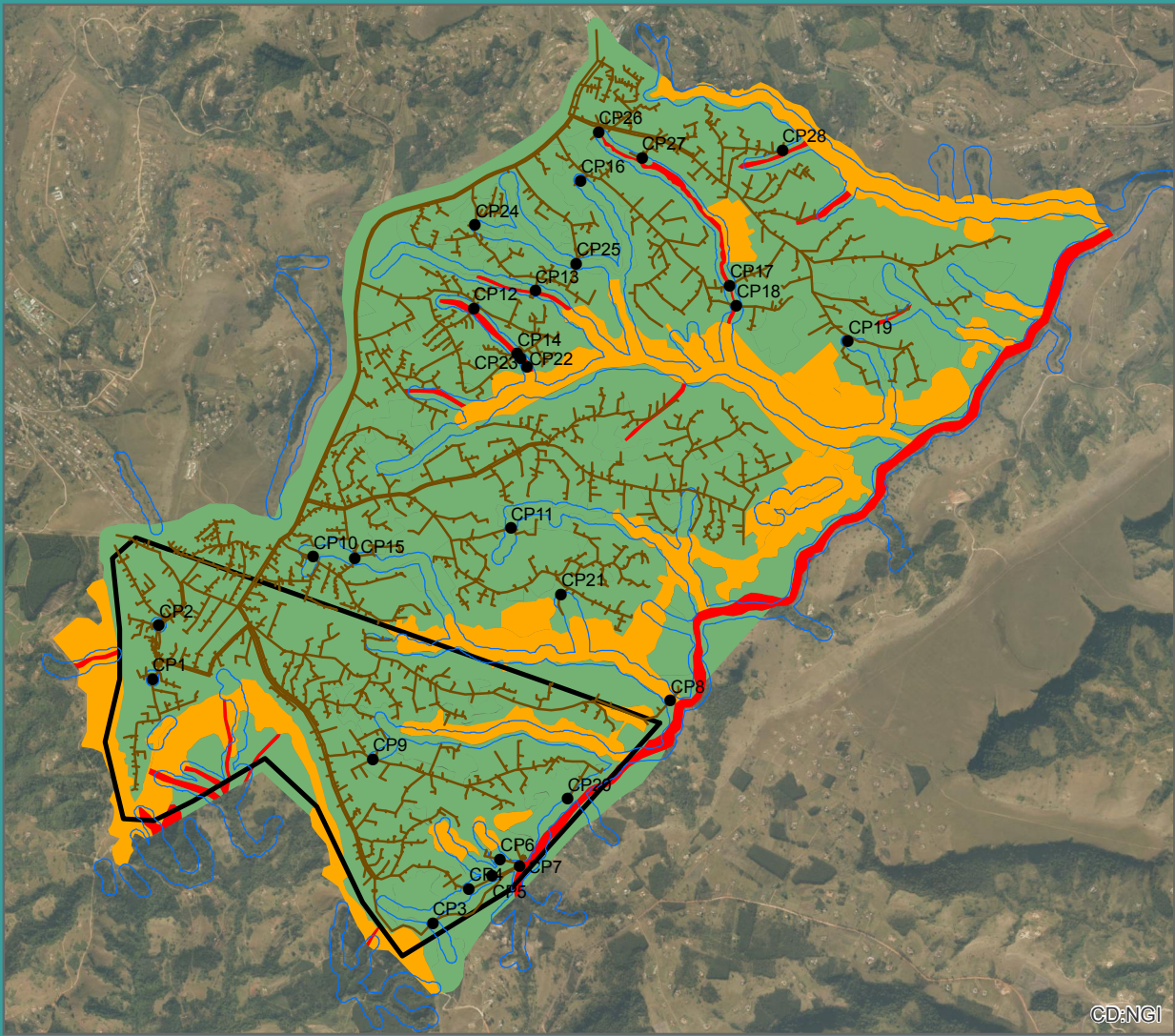
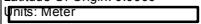


Emergency Nondabula Water Reticulation Project Sensitivity Map


- ## Legend
-  Proposed Pipeline
 -  High Sensitivity
 -  Low Sensitivity
 -  Medium Sensitivity
 -  30 m Watercourse Buffer
 -  Water Crossing Points
 -  Project Site boundary



Coordinate System: LO31 WGS84
 Projection: Transverse Mercator
 Datum: WGS 1984
 False Easting: 0.0000
 False Northing: 0.0000
 Central Meridian: 31.0000
 Scale Factor: 1.0000
 Latitude Of Origin: 29.0000
 Units: Meter  Meters



Date: 2015/08/05
 Author: Humayrah Bassa
 Reference: W01.DUR.000180
 Data Sources: NGI, SANBI
 P.O. Box 55
 6 Payne Street
 Pinetown
 KwaZulu-Natal
 Tel. +27 31 719 5500
 www.rhdhv.com

 **Royal HaskoningDHV**
Enhancing Society Together

CD&NGI

1:50 000