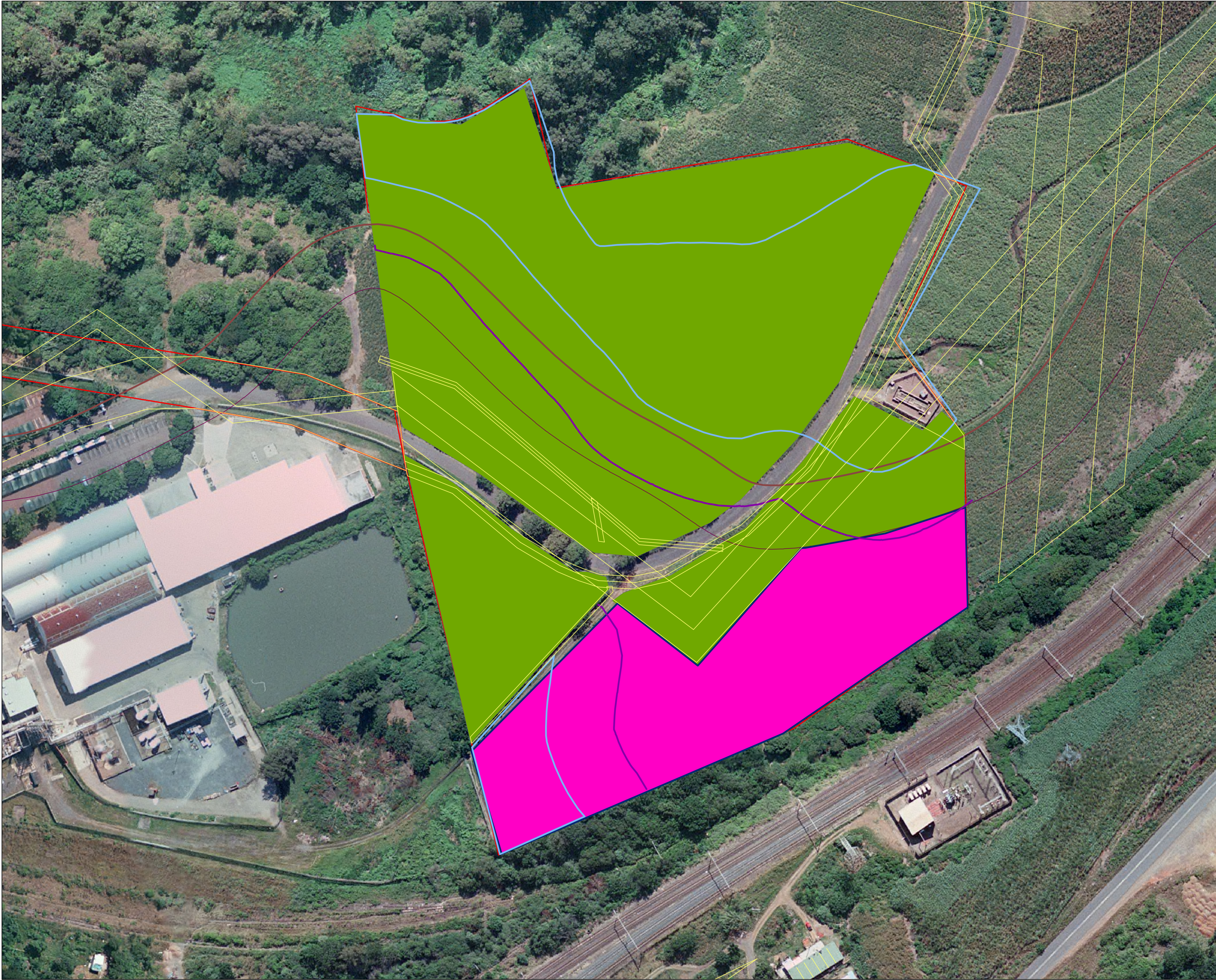


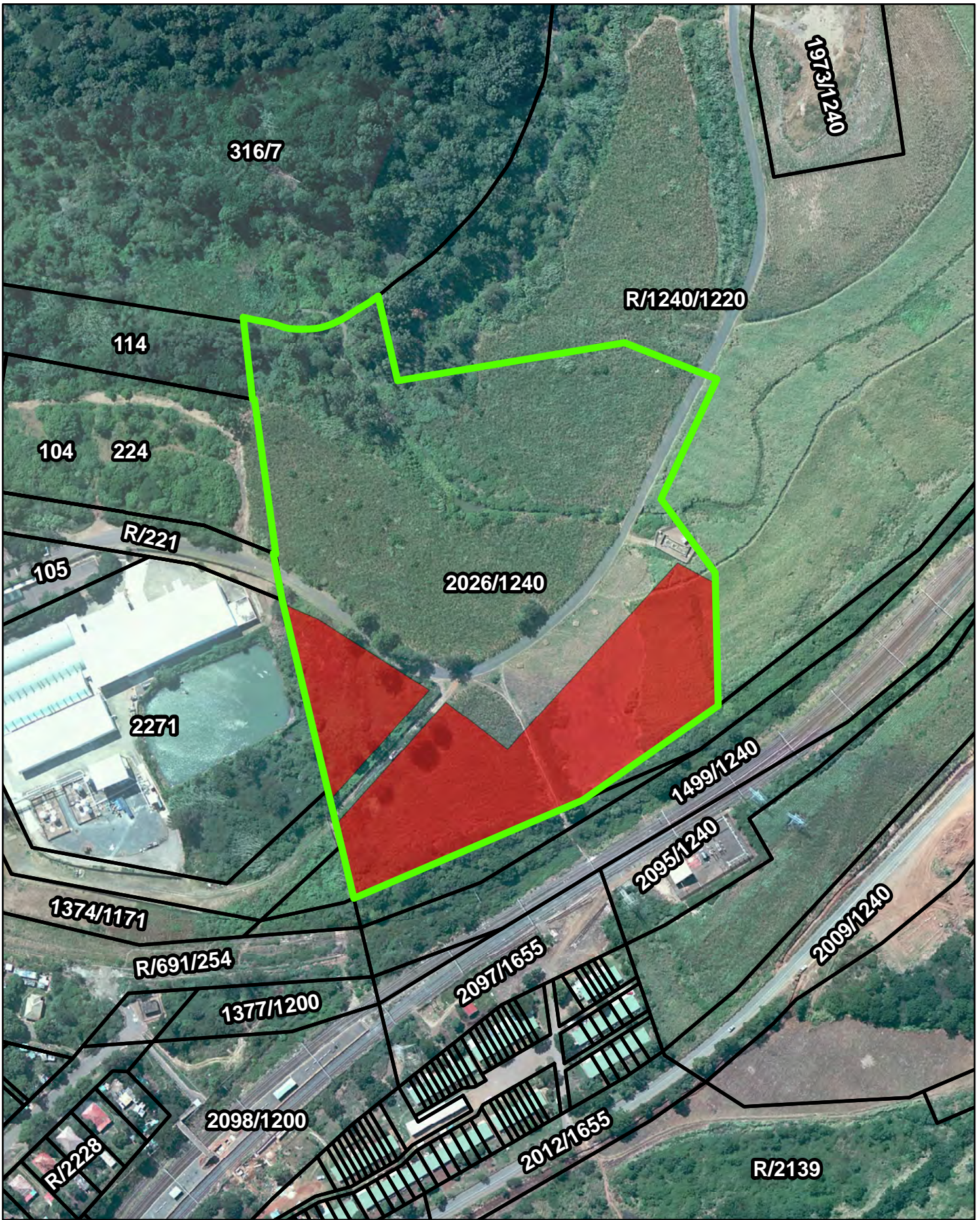
Canelands



- Legend**
- servitudes
 - gtw196_fw_system_lo31
 - gtw196_32m_buffer_line_lo31
 - Development foot print (1.555639 Ha)
 - 100_yr_flood_plains
 - 30m floodline buffer
 - Open Space & servitudes (5.027348 Ha)





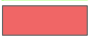
1:800
(A4)



Canelands Layout Option 2

2013 Aerial Imagery

LEGEND

-  Cadastral
-  TH Landholdings
-  Developable Area: 2.24Ha



0 10 20 40 60 80

Meters

1:3 000

(A4)

DISCLAIMER
THE INFORMATION REPRESENTED IN THIS PLAN IS FOR GENERAL INFORMATION PURPOSES ONLY AND IS SUBJECT TO CHANGE.

FILE REF:

Q:\TH\Dev\Canelands\Projects\General\Canelands Layout Option 2.mxd

DATE:

30 June 2015



LEGEND	
PROPERTY BOUNDARY	-----
PROPOSED ELECTRICAL CONNECTION	-----

NO.	DESCRIPTION	DATE	APPR'D
2	PLATFORM ADDED, ELECTRICAL ROUTE REVISED	29/05/14	
1	FOR INTERNAL REVIEW		

DESIGNED	C.K.	APPROVED	<i>[Signature]</i>	SCALE	1:5000
DRAWN	R.C.	PROJECT MANAGER		DATE	20/11/2012
CHECKED		DIRECTOR			

CANELANDS EAST	
PROPOSED ELECTRICAL SUPPLY LAYOUT	
DRAWING NUMBER	243/211/005



BOSCH
STEMELE

Consulting Engineers • Project Managers

BOSCH STEMELE PTY LTD.
P O BOX 2178, DARWIN, NT
1 WALWOOD PARK, 6 CAROLINE ROAD,
LA LUYA RESERVE OFFICE ESTATE, KUNZELUNTER, WA
TEL: (08) 2521 8200 TEL/FAX: (08) 2521 8211
E-MAIL: bosch@boschstemele.com.au
WWW.BOSCHSTEMELE.COM.AU





LEGEND	
PROPERTY BOUNDARY	— — — — —
EXISTING SEWER RETICULATION	— — — — —
PROPOSED SEWER CONNECTION	— — — — —
ALTERNATIVE SEWER CONNECTION	- - - - -
PROPOSED INYANINGA SEWER OUTFALL MAIN	— — — — —

REV.	DESCRIPTION	DATE	APP'R'D
2	SEWER LINE & PS REPOSITIONED	28/05/2014	
1	FOR INTERNAL REVIEW		

DESIGNED C.K.
 DRAWN R.C.
 CHECKED

APPROVED
[Signature]
 PROJECT MANAGER

 DIRECTOR

SCALE
 1:5000
 DATE
 20/11/2012

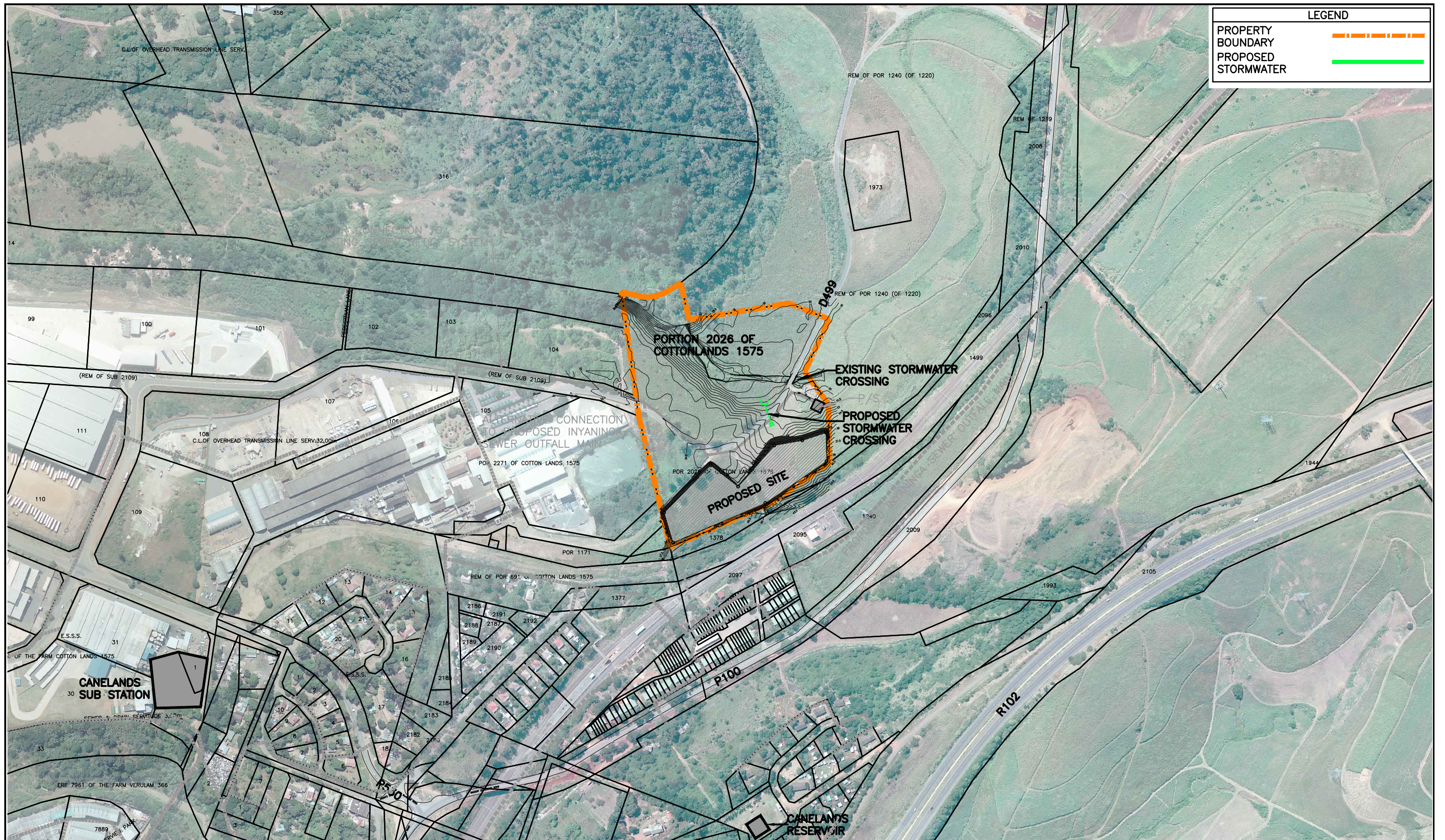
CANELANDS EAST
 PROPOSED SEWER RETICULATION LAYOUT

COPYRIGHT AND USE OF THIS DRAWING IS RESERVED BY BOSCH STEMELE

DRAWING NUMBER 243/211/007 A3 REVISION 2

BOSCH STEMELE
 Consulting Engineers • Project Managers

BOSCH STEMELE PTY LTD
 PT 201 285, DUNDON ROAD
 1100 GOSWICK RD, CHESTER ROAD
 1100 GOSWICK RD, CHESTER ROAD
 TELEPHONE: (011) 555 8000 TELEFAX: (011) 555 8111
 www.boschstemele.co.za



LEGEND	
PROPERTY BOUNDARY	
PROPOSED STORMWATER	

REV.	DESCRIPTION	DATE	APPR'D
1	FOR INTERNAL REVIEW	14/09/15	


DESIGNED	P.G.T.	APPROVED		SCALE	1:5000
DRAWN	R.C.	PROJECT MANAGER		DATE	14/09/2015
CHECKED		DIRECTOR			

CANELANDS EAST	
PROPOSED STORMWATER LAYOUT	
DRAWING NUMBER	243/211/008
A3	REVISION 1

COPYRIGHT AND USE OF THIS DRAWING IS RESERVED BY BOSCH STEMELE

BOSCH STEMELE
Consulting Engineers • Project Managers

BOSCH STEMELE (PTY) LTD.
P.O. BOX 2009, DURBAN, 4000.
1 HOLWOOD PARK, 5 CANEGATE ROAD,
LA LUCIA RIDGE OFFICE ESTATE, KWAZULU-NATAL, RSA
TELEPHONE: (031) 535 6000 TELEFAX: (031) 535 6011
E-mail: bosch@boschstemele.co.za www.boschstemele.co.za



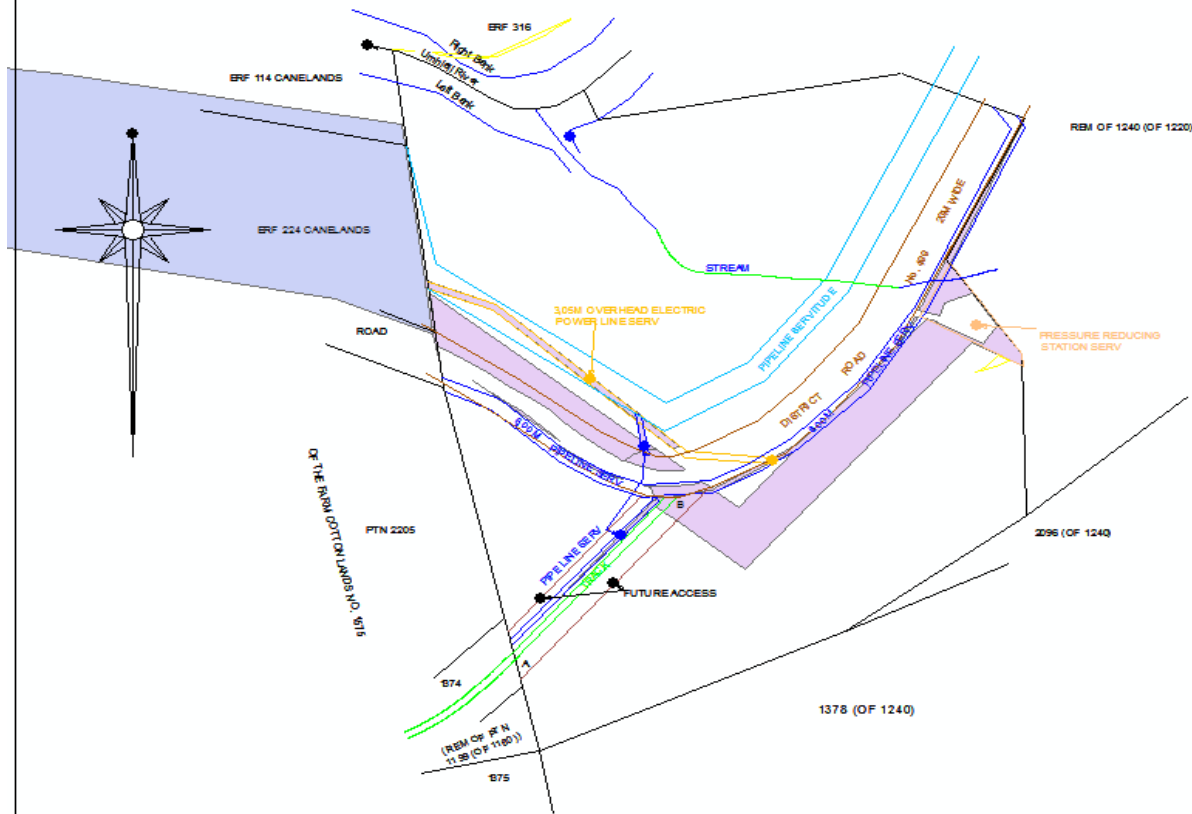
PLAN SHOWING

PORTION 2026 (OF 1240) OF THE FARM COTTON LANDS No. 1575

SITUATE IN THE ETHEKWINI MUNICIPALITY - NORTH ENTITY

REGISTRATION DIVISION - FU , PROVINCE OF KWAZULU-NATAL

SCALE 1 : 2 000



NOTES

Open Space

100 Year Flood Line Shown Thus

REVISION

DATE	MK	REVISION
3-06-2013	A	Added 100 Year Flood Line
06-09-2013	B	Added Wetlands
08-09-2013	C	Open Spaces

**CLIFF, HARVEY
& PARTNERS**

P.O. Box 2018
WESTVILLE, 3630
TEL: (031) 2666626
FAX: (031) 2667322
EMAIL: chaps@lafica.com

PROFESSIONAL LAND SURVEYORS TOWNSHIP PLANNERS
AIR SURVEY CONSULTANTS ENGINEERING & TOPOGRAPHICAL SURVEYORS

SECTIONAL TITLE PRACTITIONERS
13A HARRISON ROAD, WESTVILLE, 3629

H. E. H.
PROFESSIONAL LAND SURVEYOR

DRAWN H. E. H. DATE 11 - 05 - 2013

DISK FILE No. DRAWING NUMBER REVISION

DGN 9462 3462/1 C

3462/1