

PUBLIC PARTICIPATION REPORT

PPP SUMMARY

PUBLIC PARTICIPATION SUMMARY

This serves as a summary of the Public Participation Process (PPP) followed for the proposed construction of a 3 km Pipeline and associated infrastructure on Portions 0 and 5 of Farm Sand Draai 391, near Groblershoop, Northern Cape.

The PPP commenced in September 2014 where site notices were erected at the start point and end point of the proposed construction of a 3 km Pipeline and associated infrastructure.

During this time comment forms & BID flyers were distributed to neighbouring properties as well as other interested and affected parties (I&APs). In addition, a notification letter with background information to the development was sent via email to all registered interested and affected parties captured in the previous application for environmental authorisation for the pipeline. An advert was placed in the *Kalahari Bulletin* newspaper on the 11th September 2014, followed by a comment period which was open for the I&APs to raise their issues and concerns regarding the proposed activity. A draft Basic Assessment Report and Environmental Management Programme was compiled, and was distributed to the relevant authorities and to the public for review, for a 40 day comment period in which I&AP's were afforded the opportunity to raise any further issues and concerns, until the finalisation of the document. The final BAR was circulated to I&APs for an additional 7 day review period. The final BAR was then submitted to the National Department of Environmental Affairs (DEA).

PUBLIC PARTICIPATION AS PART OF THE SCOPING PP PROCESS

- **Public Notices/Site Notices**

Public notices and site notes were displayed at the entrance of the site, at areas frequently used by the public and along the farm road: Refer to copy of:

- Site notice, providing the displayed detail in the Appendix;
- Photographs as proof of site notices displayed.

- **Written Notices and Background Information Document (BID)**

A background information document (BID) and notification letter with an invitation to register as I&APs and to submit comments as per attached comment sheet was distributed as follows:

- Hand-delivered to landowner;
- Contacted via Telephone and/or Emailed to I&AP database (which included neighbouring properties);
- Placed at locations frequently used by the public.

Refer to Background Information Document provided in the PPP section (Appendix) for the detail regarding individuals contacted as per above-mentioned list as well as content of BID and comment form.

- **Advertisements**

Advertisements regarding *inter alia* the proposed project scope of works, location and details of locations and date for draft Basic Assessment Report review, as well as details of EAP, were placed in the *Kalahari Bulletin* newspaper (11.09.2014).

Refer to proof of placement of advert in the PPP section (Appendix) – Adverts.

- **Public Meeting**

No public meeting was held but stakeholders were engaged with.

- **I&AP Communication**

I&AP's notified in person, by telephone and/or via email, through distribution of BID's and through Site Notices. No correspondence received from I&APs during 40-day comment period. Proof of communication with organs of state, landowner and I&AP's is provided in the Appendix.

- **I&APs Comments**

No correspondence received from I&APs for an Issue Trail to be developed and maintained.

Refer to attached comments: Appendix – I&AP Database for proof of database and that no comments were received to date.

- **Draft Basic Assessment Report Review**

The draft Basic Assessment Report has been made available for review for a period of 40 days and hard copies were placed at the following venues, as advertised:

- Grblershoop Library; and
- RHDHV Website: www.rhdhv.com

- **Final Basic Assessment Report Review**

The final Basic Assessment Report has been made available for review for a period of 7 days. The report was made available online as follows:

- RHDHV Website: www.rhdhv.com

I&APs were notified that should they wish to make additional comment, they were to submit comments directly to the DEA and to provide the EAP with a copy.

- **Issues Trail**

I&AP's were notified in person, by telephone and/or via email, through distribution of BID's and through Site Notices. No correspondence received from I&APs for an Issue Trail to be developed and maintained.

Refer to attached comments: Appendix – I&AP Database for proof of database and that no comments were received to date.

- **Ongoing I&AP / Stakeholder communication**

The project Team has ongoing communication with I&AP's to ensure the continued involvement of all stakeholders and I&AP throughout the BA process and beyond.

PUBLIC PARTICIPATION REPORT

SITE NOTICE

**NOTICE OF APPLICATION FOR
ENVIRONMENTAL AUTHORISATION**

**PROPOSED CONSTRUCTION OF A 3 KM PIPELINE AND ASSOCIATED
INFRASTRUCTURE ON PORTIONS 0 AND 5 OF FARM SAND DRAAI 391, NEAR
GROBLERSHOOP, NORTHERN CAPE**

DEA Reference: 14/12/16/3/3/1/1214

OVERVIEW

Notice is hereby given in terms of the **Environmental Impact Assessment Regulations (EIA) (2010)** published in terms of Government Notice Regulation (GNR) No. 543 to 545, in terms of Section 24(5) of the National Environmental Management Act (Act No. 107 of 1998)(as amended) of the initiative by **ACWA Power Solafrica Boksport CSP Power Plant (Pty) Ltd**, to undertake the proposed construction of a 3 km pipeline and associated infrastructure on portions 0 and 5 of the farm Sand Draai 391, near Groblershoop in the Northern Cape.

A Basic Assessment study for a 15 km water pipeline (and associated infrastructure) to the CSP plant was conducted in 2012. An environmental authorisation (Ref No: 14/12/16/3/3/1/591) was granted for this on 8 March 2013.

Since the authorisation, a refinement of the design, mostly due to abstraction point challenges, has taken place that has resulted in the proposed re-alignment of approximately 3 km of underground PVC water pipeline with a diameter of approximately 316 mm, as well as the substitution of storage ponds with storage/regulation tanks in line with the industry standard design for bulk raw water storage in CSP plants worldwide.

The objective of constructing the proposed pipeline is to supply filtered water from the Orange River to the approved Concentrating Solar Thermal Power Plant, with a maximum electricity generation capacity of 75 MW, which is currently undergoing construction.

In respect of the above, the applicant, **ACWA Power Solafrica Boksport CSP Power Plant (Pty) Ltd** intends to undertake a Basic Assessment process as contemplated in the EIA Regulations for the process of applying for authorisation for the above proposed development to the relevant environmental authority, the **National Department of Environmental Affairs (DEA)**.

PUBLIC PARTICIPATION PROCESS

As part of the public participation process, you are invited to review and make comment on the draft **Basic Assessment Report**. The documents will be available as follows:

Site	<ul style="list-style-type: none">Groblershoop LibraryRoyal HaskoningDHV website: www.rhdhv.co.za
Review period	Will be advertised and notification will be sent to all registered I&APs

CONTACT PERSON FOR MORE INFORMATION

Royal HaskoningDHV, as an independent **environmental assessment practitioner**, has been assigned to undertake the required **Basic Assessment study** for the proposed project. Interested I&APs are invited to register by submitting their name, contact information and interest in the project to the Environmental Consultant.

Mr Bjorn Hoffmann	PO Box 55, Pinetown, 3600	
	Tel: 031 719 5571	
	Fax: 031 719 5505	
Royal HaskoningDHV	Email: bjorn.hoffmann@rhdhv.com	

PUBLIC PARTICIPATION REPORT

PROOF OF SITE NOTICE









PUBLIC PARTICIPATION REPORT

ADVERTISEMENT

Geklassifiseerd

NOTICE OF APPLICATION FOR ENVIRONMENTAL AUTHORISATION KENNISGEWING VAN AANSOEK VIR OMGEWINGSMAGTIGING

PROPOSED CONSTRUCTION OF A 3 KM PIPELINE AND ASSOCIATED INFRASTRUCTURE ON PORTIONS 0 AND 5 OF FARM SAND DRAAI 391, NEAR GROBLERSHOOP, NORTHERN CAPE

VOORGESTELDE KONSTRUKSIE VAN 'N 3 KM PYPLYN EN GEPAARDGAANDE INFRASTRUKTUUR OP GEDEELTES 0 EN 5 VAN DIE PLAAS SAND DRAAI 391, NABY GROBLERSHOOP, NOORD-KAAP

DEA reference/verwysing: 14/12/16/3/3/1/1214

Notice is hereby given in terms of the **Environmental Impact Assessment Regulations (EIA)** (2010) published in terms of Section 24(5) of the National Environmental Management Act (Act No. 107 of 1998) (as amended), more specifically Government Notice Regulation (GNR) No. 543 to 546, of the initiative by **ACWA Power Solarfrica Bokpoort CSP Power Plant (Pty) Ltd**, to undertake the proposed construction of a 3 km pipeline and associated infrastructure on portions 0 and 5 of the farm Sand Draai 391, near Groblershoop in the Northern Cape.

Hiermee kennisgewing ingevolge omgewingsimpakbeoordelingsregulasies (2010) kragtens Artikel 24(5) van die wet op omgewingsbestuur (wetnommer 107 van 1998) (soos gewysig), meer spesifiek staatskennisgewingnommer R543 tot 546 van 2010, van die inisiatief deur **ACWA Power Solarfrica Bokpoort Gekonsentreerde Sonkrag (GSK) Stasie (Pty) Ltd** om die voorgestelde konstruksie van 'n 3 km pyplyn en die gepaardgaande infrastruktuur op gedeeltes 0 en 5 van die plaas Sand Draai 391, naby Groblershoop in die Noord-Kaap te onderneem.

A basic assessment study for a 15 km water pipeline (and associated infrastructure) to the CSP plant was conducted in 2012. An environmental authorisation (Ref No: 14/12/16/3/3/1/591) was granted for this on 8 March 2013.

'n Basiese impakbeoordelingsstudie vir 'n 15 km waterpyplyn (en gepaardgaande infrastruktuur) wat konekteer met die GSK-stasie is in 2012 onderneem. 'n Omgewingsmagtiging (verwysingsnommer 14/12/16/3/3/1/591) is toegeken vir hierdie proses op 8 Maart 2013.

Since the authorisation, a refinement of the design, mostly due to abstraction point challenges, has taken place that has resulted in the proposed re-alignment of approximately 3 km of underground PVC water pipeline with a diameter of approximately 315 mm, as well as the substitution of storage ponds with storage/regulation tanks in line with the industry standard design for bulk raw water storage in CSP plants worldwide.

Sedert die magtiging het 'n opdatering van die ontwerp plaasgevind as gevolg van onttrekkingspuntuitdagings. Dit het gevolg tot die herbelyding van ongeveer 3 km van die ondergrondse PVC-waterpyplyn, met 'n deursnee van ongeveer 315 mm, asook die vervanging van die stoordam en stoor-/reguleringsstelsels in lyn met die bedryf se standaardontwerp ten opsigte van grootmaatrouwaterberging in GSK-stasies wêreldwyd.

The objective of constructing the proposed pipeline is to supply filtered water from the Orange River to the approved Concentrating Solar Thermal Power Plant, with a maximum electricity generation capacity of 75 MW that is currently undergoing construction.

Die doel van die bou van die voorgestelde pyplyn is om gefiltreerde water uit die Oranjerivier aan die goegekoeerde GSK-stasie, met 'n maksimum elektrisiteitsopwekkingvermoë van 75 MW (huidiglik onder konstruksie), te voorsien.

In respect of the above, the applicant, **ACWA Power Solarfrica Bokpoort CSP Power Plant (Pty) Ltd** intends to undertake a basic assessment process as contemplated in the EIA regulations for the process of applying for authorisation for the above proposed development to the relevant environmental authority, the **National Department of Environmental Affairs (DEA)**.

Ten opsigte van bogenoemde, beoog die aansoeker, **ACWA Power Solarfrica GSK Stasie (Pty) Ltd**, om 'n basiese evalueringproses soos in die omgewings-impakbeoordelingsregulasies uiteengesit, vir magtiging deur die **Nasionale Departement van Omgewingsake (NDO)** te onderneem.

PUBLIC PARTICIPATION PROCESS OPENBAREDEELNAMEPROSES

As part of the public participation process, you are invited to review the draft Basic Assessment Report and make comment on the document. The report will be available for review at the following public places:

- Groblershoop Library
- Royal HaskoningDHV website: www.rhdhv.co.za

Please note: The comment period is 40 days from **Friday, 12 September 2014 to Wednesday, 22 October 2014**.

As deel van die openbaredeelnameproses word u vriendelik genooi om die konsep-basiese impakbeoordelingsverslag (BIV) te hersien en kommentaar te lewer daarop. Die verslag sal ter insae beskikbaar wees by die volgende openbare kantore en webwerf:

- Groblershoop Biblioteek
- Royal HaskoningDHV webtuiste: www.rhdhv.co.za

Neem kennis: Die kommentaar tydperk is vir 40 dae vanaf **Vrydag, 12 September 2014 tot Woensdag 22 Oktober 2014**.

WHO SHOULD YOU CONTACT? WIE MOET EK KONTAK?

Royal HaskoningDHV, as an independent environmental assessment practitioner, has been assigned to undertake the required basic assessment study for the proposed project.

Interested I&APs are invited to register by submitting their name, contact information and interest in the project to the environmental consultant listed below.

Royal HaskoningDHV, 'n onafhanklike omgewingsinvloedbeoordelingspraktisyn, is aangestel om die basiese impakbeoordelingsstudie te onderneem ten opsigte van die voorgestelde projek.

Alle belangstellende en geaffekteerde persone word vriendelik versoek om geskrewe kommentaar aan die ondergenoemde openbaredeelnamekonsultant aan te stuur:

Bjorn Hoffmann
Environmental Consultant
Royal HaskoningDHV
PO Box 55, Pinetown 3600
Tel. 031 719 5571
Fax 031 719 5505
E-mail: bjorn.hoffmann@rhdhv.com

KURUMAN GRAFSTENE
TOMBSTONES
THE ONLY FACTORY IN KURUMAN
We can beat ANY written quotation
URGENT ORDERS ACCEPTED
SPECIAL R4 200
IMPORTANT NOTICE
Please note that our showroom behind the BP Garage will be closed for the revamping of the Shoprite Mall. Come and visit Kuruman Tombstones factory in Produce Road, Industrial Area, in Kuruman or our showroom at the old station building just opposite No Jokes shop or call 053 712 3853. We also do granite kitchen tops.

INCLUDES:
HEADSTONE, KERBS,
WHITE MARBLE CHIPS,
FREE LETTERING
FREE TRANSPORT (60km)
FREE ERECTION
FREE INVITATION CARDS (40)

20 YEARS GUARANTEE

SHOWROOMS:
Old Station Building 053 712 0808
053 712 3853 • 053 712 0151
082 321 8142 • 072 712 2382

TRANSMAN
WORK FOR AFRICA

CODE-14 DRIVERS REQUIRED URGENTLY IN KURUMAN
Requirements:
Fluent in English
Valid matric certificate
Valid driver's licence and PDP
Minimum 3 years' driving experience

FORKLIFT OPERATORS REQUIRED URGENTLY IN KURUMAN
Requirements:
Fluent in English
Valid matric certificate
Valid, original operator certificates and licences
Minimum of 2 years' experience

To apply, please contact Wouter or Darrell on 051 444 2341 or woutero@transman.co.za or darrellb@transman.co.za
Documentation required:
Original SA ID document, valid matric certificate, contactable references, original licence and certificates, CV and any relevant information.

GW GOLDWAGEN®

Goldwagen Kuruman maak binnekort sy deure oop.

- 2 poste beskikbaar.
 - Verkoopspersoon: Toonbankverkope ('counter sales'). Basiese salaris en kommissie word betaal.
 - Administratiewe dame: Basiese salaris word betaal.
 - Verkoopspersoon moet bereid wees om een kalendermaand in Pretoria opleiding doen en die administratiewe dame moet vir een kalenderweek kan gaan.
- Vorige ondervinding sal voordelig wees vir beide poste.

Indien u belangstel, stuur asb. u CV na:
Jobs@gridlogic.co.za

4 x Auto Electricians (qualified)
■ 5 years' experience in the mining, motor and auto elec. industry
Valid driver's licence.

2 x Sales Rep's
■ 5 years' experience in the mining industry
■ Valid driver's licence.
■ Experience in the motor trade, auto elec., trackless and service mining industry.

2 x Air Conditioning Technicians
■ 5 years' experience
■ New installation and repairs in the commercial and mining industry.
■ Valid driver's licence.

Area: Kathu, Northern Cape
Send CV to: sales@electrodiesel.co.za

PUBLIC PARTICIPATION REPORT

BID & COMMENT FORM

ENVIRONMENTAL IMPACT ASSESSMENT PROCESS

PROPOSED CONSTRUCTION OF A 3 KM PIPELINE AND ASSOCIATED INFRASTRUCTURE ON PORTIONS 0 AND 5 OF FARM SAND DRAAI 391, NEAR GROBLERSHOOP, NORTHERN CAPE



BACKGROUND INFORMATION DOCUMENT

(September 2014)

DEA Reference: 14/12/16/3/3/1/1214

What does this document tell you?

This document aims to provide you, as an **Interested and Affected Party (I&AP)**, with background information regarding the proposed **construction of a 3 km pipeline and associated infrastructure** being undertaken by **ACWA Power Solafrika Bokpoort CSP Power Plant (Pty) Ltd.**

The document also provides information regarding the **Basic Environmental Impact Assessment (BA)** process to be undertaken. The document advises you on how you can become involved in the project – by reviewing information, and making inputs thereon, including raising any possible issues. This sharing of information forms the basis of the **public participation process** and offers you the opportunity to become actively involved in the project from the outset. Public participation allows for local knowledge to be integrated into the BA as generated.

What does the project entail?

The project can be summarised as follows:

Project name	Basic Assessment for the Proposed Construction of a 3 km Pipeline and Associated Infrastructure on Portions 0 and 5 of Farm Sand Draai 391, near Groblershoop, Northern Cape			
Local authority	!Kheis Local Municipality – Northern Cape			
Landowner(s)	Mr. Johannes Fourie (Farm Sand Draai 391)			
Location	Located on Portions 0 and 5 of the farm Sand Draai 391. Travel along the N10 towards Groblershoop, turn left onto the N10 towards Griekwastad. Travel along the N10 for approximately 4 kms and turn left towards the farm Sand Draai.			
Co-ordinates	Pipeline			
	STARTING POINT (PREFERRED)			
	Latitude / Longitude	Degrees	Minutes	Seconds
	South	28 ⁰	47'	10.92"
	East	21 ⁰	53'	14.00"
	STARTING POINT (ALTERNATIVE)			
	Latitude / Longitude	Degrees	Minutes	Seconds
	South	28 ⁰	46'	54.42"
	East	21 ⁰	54'	46.13"
	ENDING POINT (NEW ABSTRACTION POINT: SHALOM POINT)			
	Latitude / Longitude	Degrees	Minutes	Seconds
	South	28 ⁰	48'	18.94"
East	21 ⁰	53'	04.00"	
Pump Station				
	Latitude / Longitude	Degrees	Minutes	Seconds
Corner 1	South	28 ⁰	47'	9.86"
	East	21 ⁰	53'	14.31"
Corner 2	South	28 ⁰	47'	10.21"
	East	21 ⁰	53'	14.37"
Corner 3	South	28 ⁰	47'	10.16"

	East	21°	53'	14.89"
Corner 4	South	28°	47'	9.78"
	East	21°	53'	14.82"

Description of the proposed project

On 14 June 2011, Solafrica Thermal Energy (Pty) Ltd received Environmental Authorisation for the *Construction of a 75 MW Concentrated Solar Thermal Power (CSP) Plant and associated infrastructure in the Siyanda District Municipality, Northern Cape (DEA Ref 12/12/20/1920)*.

In addition, a Basic Assessment study for a 15 km water pipeline to the CSP plant was conducted in 2012 that sought environmental authorisation for the following infrastructure:

- ✦ the water pipeline (extending from the Orange River through the farm Sand draai 391 and terminating at the farm Bokpoort 390);
- ✦ a pump station on the farm Sand draai 391; and
- ✦ storage ponds as well as associated infrastructure on the approved CSP site on portion 0 of the farm Bokpoort 390.

An environmental authorisation (Ref No: 14/12/16/3/3/1/591) was granted for the pipeline on 8 March 2013.

Since the authorisation, a refinement of the design, mostly due to abstraction point challenges, has taken place that has resulted in the proposed re-alignment of approximately **3 km** of underground PVC water pipeline with a diameter of approximately **315 mm** of the previously authorised pipeline, as well as the substitution of storage ponds with storage/regulation tanks in line with the industry standard design for bulk raw water storage in CSP plants worldwide.

After studies were undertaken at the river intake point, it was established that during some months of the year, it will not be possible to abstract water due to level changes that occur during the different seasons. Therefore, a decision was made to change the water abstraction point to a new point (Shalom) (indicated by the blue circle on locality map) and this will result in a re-alignment of the original (approved) route by 3 km from the abstraction point (indicated in green on the locality map, Figure 1, below).

The proposed 3 km re-alignment and associated infrastructure traverses only one farm, namely Sand draai 391.

The objective of constructing the proposed pipeline is to supply filtered water from the Orange River to the approved CSP plant that is currently undergoing construction.

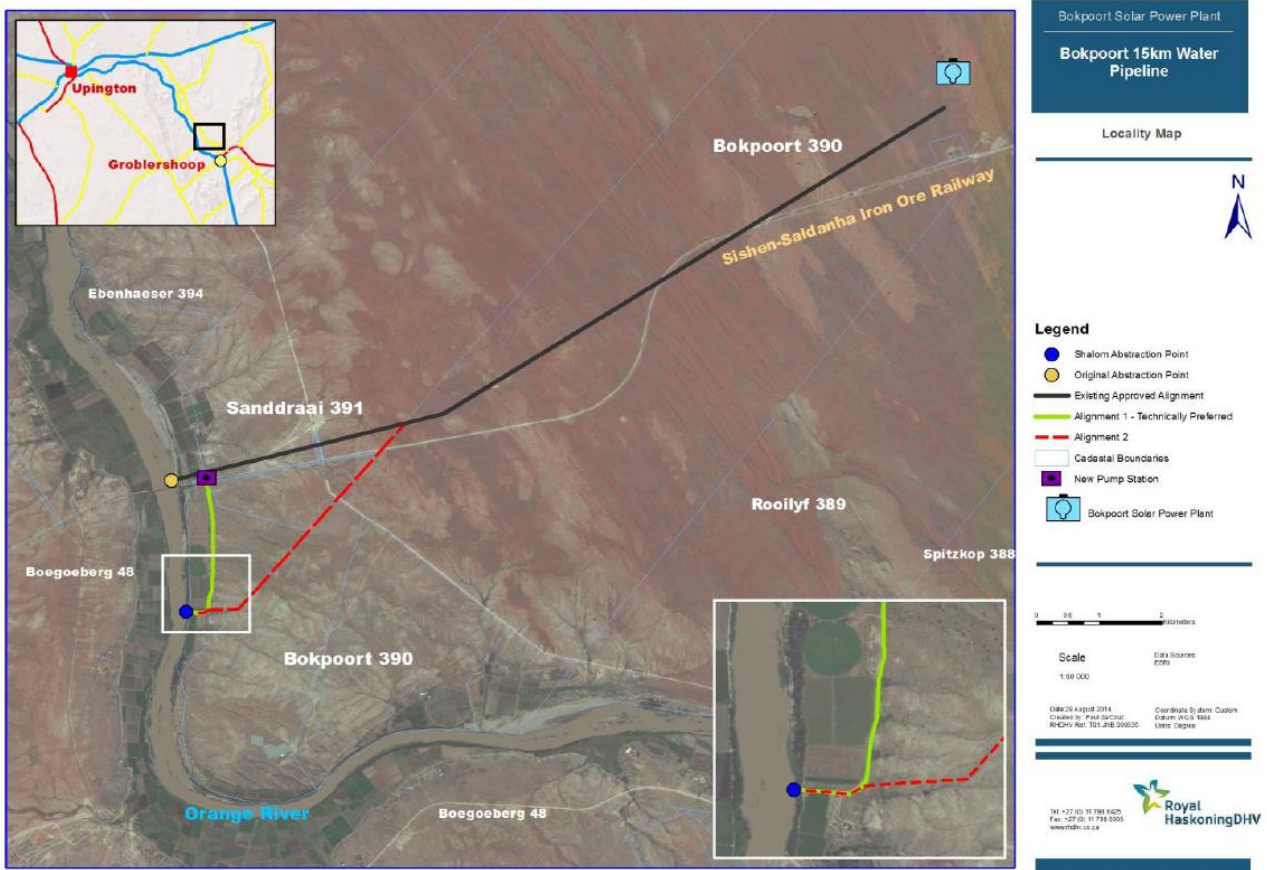


Figure 1: Locality Map

The pipeline alignment alternatives relate to two proposed routes:

- ✦ Pipeline alignment from the pump station on the approved alignment, along existing farm roadway servitude to Shalom point (preferred); or
- ✦ A diagonal route from a point along the approved alignment, along an existing farm boundary fence to Shalom point (not preferred).

The pipeline alignment along the existing farm roadway servitude is the shortest route, and traverses a largely transformed landscape.

Associated infrastructure required includes:

New Proposed Abstraction Point (Shalom)

The newly proposed abstraction point called Shalom, is an *existing* abstraction point (see Figure 2 below). Although there is no site alternative for the abstraction point, there are two alternative options for abstracting water from the river: either through the use of a Floating Intake System (Raft Structure) or Infiltration Galleries. The Floating Intake System is the preferred option as it is easier to construct, more cost effective and a less intrusive method than the Infiltration Galleries. Infiltration Galleries would have a far larger footprint area within the sensitive riparian zone along the Orange River.

The water will then be pumped from the new abstraction point through a 250 mm uPVC pipeline to a pump station approximately 340 m away from the river.



Figure 2: New (Shalom) Abstraction Point

Details of the raw water pump installation proposed are as follows:

- ✦ Two pumps are to be stationed on a stainless steel floating device (raft) which will be anchored to concrete blocks. These anchor blocks will be on both sides of the quick coupling pipes on the side of the embankment fill and will be used to connect the raft when the water level rises.
- ✦ The pumps will not operate simultaneously, but will be altered automatically. In the case of one pump failing, the other pump will serve as the backup.
- ✦ Stabilizing of river embankment at raw water extraction point must be done by means of Gabions, Reno mattresses or stone pitching.
- ✦ Each pump is designed to deliver water at a flow rate of 210 m³/h from the abstraction point; this is 10% more than required. Providing a higher flow in the raw water rising main than the clear water rising main will ensure that the storage reservoir is always full and that the pumps are not required to pump 24 h/day.
- ✦ Each pump will be driven by 45 kW 400 V electric motors. The motor speed will be 1450 r.p.m. to avoid damage to the impellers as a result of silt in the water.
- ✦ Larger electrical motors have been sized in order to protect them in the case of a pipe burst.
- ✦ The river pump station will be manually controlled or with a timer depending on the operation methods that is chosen.

Raw Water Rising Main to the Filtration Plant

A 250 mm \varnothing uPVC underground rising main pipeline of pressure Class 9, over a distance of approximately 340 m is

proposed. The flow velocity in the single 250 mm \varnothing PVC rising main will be 1.38 m/s with a maximum pressure of approximately 44.2 m. This high flow velocity is required to prevent silt settling in the line.

The electrical power cable (power supply to the river pump installation) and the instrumentations cable will be installed in the same trench as the rising main. The depth of the pipeline will be approximately 1.15 m, depending on the NGL and the slope of the pipeline. A geotechnical analysis of the ground will be done to determine the amount of hard rock and the ground properties along the pipeline route.

Pump Station Deviation

The amended design from that previously authorised involves the substitution of storage ponds with storage/regulation tanks in line with the industry standard design for bulk raw water storage in CSP plants worldwide.

Filtration System

Upon entering the pump station, the water will be treated with a sand filtration system where sand filters will backwash on a time and pressure differential principle. The filtration system will consist of ten (10) CONN40 SAND FILTERS, each capable of handling a flow of 25 -30 m³/h. 8 sand filters will be sufficient as the calculations with 25 m³/h is conservative, the flow will be 26.5 m³/h if 8 filters are used, which is still acceptable. The filtration system is designed with a redundancy of 25% extra, therefore 10 sand filters must be installed. The extra filters will also be able to serve as back-up filters in case some of the filters are out of order to ensure that the required flows are provided.

A short backwash pipeline to a small pond belonging to the farmers will handle the backwash water. The backwash process will be controlled with a timer or a pressure differential switch, located at the control room of the clear water pump station. The filtration system will be housed in the clear water pump station building.

Clear Water Pump Station

The clear water pumps proposed will be two multi-stage pumps. These pumps will be stationed in the clear water pump station building and will be as follows:

- ✦ Two pumps (WKLN 125/4 horizontal multistage centrifugal pumps or similar), one duty and one standby, will be used.
- ✦ Each pump will be driven by 110 kW 400 V electric motors. The motor speed will be 1450 r.p.m. to avoid damage to the impellers as a result of silt in the water.
- ✦ The two pumps will be housed in a brick masonry pump house (50 m x 50 m) which will also accommodate the switchgear, distribution board, MCC and backup generator if required.
- ✦ The floors of the pump station will be shaped to handle water spillages.
- ✦ The motor control room will be equipped with an air conditioner in order to keep the switchgear and motor control centre cool.
- ✦ The clear water pump station (on/off) will be controlled by the level sensors or manually.
- ✦ The pumps will deliver a minimum flow of 190 m³/h at a head of 132.8 m.

Storage Reservoir at Clear Water Pump Station

A small reservoir with a volume of 260 m³ is proposed at the clear water pump station building. This will serve as temporary storage for the clear water before it is pumped to the CSP plant. This storage reservoir is required because the sand filters will not be able to handle the high pressures if the water is to be pumped directly from the raw water plant through the sand filters to the solar plant.

The reservoir which will be situated inside the clear water pump station at 28°48'17.37"S 21°53'15.31"E will have the following characteristics:

- ✦ It will consist of a covered galvanized sectional steel tank mounted on dwarf walls.
- ✦ It will have 6 panels x 6 panels x 4 panels height i.e. (7.32 m x 7.32 m x 4.88 m).

It will be equipped with an ultrasonic level sensor and an overflow. Level control is achieved with the level switches, which will switch the pumps on at 80% and off at full supply level (98%).

From the reservoir, the filtered water will be pumped at 190 m³/hr to the storage tanks (2 x 47500 m³) located on the southern side of the approved CSP plant site. The two storage tanks at the CSP plant site were previously authorised.

The preferred options take into account the shortest route, with the least environmental impact, to a viable existing abstraction point which simply requires an upgrade to accommodate the volumes of water required for the CSP Plant.

What are the potential environmental impacts associated with the proposed project?

A number of potential environmental impacts associated with the project have been identified. As part of the BA, these potential impacts will be assessed through the following specialist studies:

Specialist Study	Organisation
Wetland Assessment	Royal HaskoningDHV (peer reviewed by external independent consultant)
Ecological Assessment	EnviRoss cc
Heritage Assessment	McGregor Museum

Input from the public through the public participation process provides valuable input in the identification of issues requiring investigation within this BA process. The study will highlight areas that should be avoided in order to minimise potential impacts, and evaluate the project alternatives.

The Basic Assessment will aim to achieve the following:

- ✎ Provide an overall assessment of the social and biophysical environments of the affected area by the proposed construction of the project;
- ✎ Undertake a detailed assessment of the preferred route/s in terms of environmental criteria including the rating of significant impacts;
- ✎ Identify and recommend appropriate mitigation measures for potentially significant environmental impacts; and
- ✎ Undertake a fully inclusive public participation process to ensure that I&AP issues and concerns are recorded and commented on.

Why are environmental studies needed?

In terms of the **Environmental Impact Assessment (EIA) Regulations** Government Notice Regulation (GNR) No. 544 to 546 of 2010 (as amended), published in terms of Section 24(5), and read with Section 44, of the National Environmental Management Act (NEMA) (Act No. 107 of 1998), **ACWA Power Solafrika Bokpoort CSP Power Plant (Pty) Ltd** requires **environmental authorisation** from the National Department of Environmental Affairs (DEA) for undertaking the proposed project as it includes activities listed under Regulation 544 of the NEMA EIA.

The following activities of GNR 544 of June 2010 have been applied for:

- ✎ Activity 9 – The construction of facilities or infrastructure exceeding 1,000 metres in length for the bulk transportation of water (i) with a peak throughput of 120 litres per second or more.
- ✎ Activity 11 – The construction of (x) infrastructure or structures covering 50 square metres or more, where such construction occurs within a watercourse or within 32 metres of a watercourse.
- ✎ Activity 18 – The infilling or depositing of more than 5 m³ into, or the dredging, excavation, removal or moving of soil, sand, shells, shell grit, pebbles or rock of more than 5 m³ from (i) a watercourse.

The following activities of the GNR 546 of June 2010 have been applied for:

- ✎ Activity 2 – The construction of reservoirs for bulk water supply with a capacity of more than 250 cubic metres.
 - (a) Northern Cape province:
 - iii. Outside urban areas, in:
 - (dd) Critical biodiversity areas as identified in systematic biodiversity plans adopted by the competent authority or in bioregional plans.
- ✎ Activity 4 – The construction of a road wider than 4 metres with a reserve less than 13.5 metres.
 - (a) Northern Cape province:
 - ii. Outside urban areas, in:
 - (aa) A protected area identified in terms of NEMPAA, excluding conservancies;
 - (ee) Critical biodiversity areas as identified in systematic biodiversity plans adopted by the competent authority or in bioregional plans.
- ✎ Activity 16 – The construction of (iv) infrastructure covering 10 square metres or more where such construction occurs within a watercourse or within 32 metres of a watercourse, measured from the edge of a watercourse, excluding where such construction will occur behind the development setback line.
 - (a) In the Northern Cape:
 - ii. Outside urban areas, in:
 - (aa) A protected area identified in terms of NEMPAA, excluding conservancies;

(ff) Critical biodiversity areas or ecosystem service areas as identified in systematic biodiversity plans adopted by the competent authority or in bioregional plans.

Activities under these listings may have an effect on the environment, hence a BA process, as prescribed in Regulations 21 to 25 of the Environmental Impact Assessment Regulations (Regulation 543), will have to be undertaken. A Basic Assessment is an effective planning and decision-making tool, which allows for the identification of potential environmental consequences of a proposed project, and its management through the planning process.

ACWA Power Solafrica Bokpoort CSP Power Plant (Pty) Ltd has appointed **Royal HaskoningDHV** (RHDHV) as independent Environmental Assessment Practitioners (EAP) to undertake the required environmental studies.

As part of these environmental studies, all I&APs will be actively involved through a public participation process.

Public Participation Process

It is important that relevant I&APs are identified and involved in the public participation process from the outset of the project. To ensure effective public participation, the process includes the following steps during the BA Process:

- ✦ **STEP 1:** Advertise the BA Process (local newspaper);
- ✦ **STEP 2:** Register I&APs and key stakeholders on the database (on-going);
- ✦ **STEP 3:** Consultation with, and transfer of information to, I&APs through consultation and stakeholder engagement;
- ✦ **STEP 4:** Invite I&AP comment and input on the draft BA report (40-day comment period); and
- ✦ **STEP 5:** Record all comments, issues and concerns raised by I&APs within an issues trail, which will form an integral part of BA Reports.

How can you get involved?

If you consider yourself an I&AP for this proposed project, we urge you to become involved.

- ✦ By responding (by phone, fax or e-mail) to our invitation for your involvement in the process;
- ✦ By completing the attached comment form and mailing or faxing it to Bjorn Hoffmann at RHDHV;
- ✦ In writing contacting consultants if you have a query, comment or require further project information; and
- ✦ By reviewing and commenting on the draft Basic Assessment Reports within the allowed 40-day review periods.

Please make use of the opportunities created by the public participation process to become involved in the process and provide comment. If you have issues and/or concerns which affect and/or interest you, please raise them. Or, if you would simply like more information, let us know.

Your input into this process forms a key part of the environmental studies and we would like to hear from you to obtain your views on the proposed project.

By completing and submitting the accompanying response form, you automatically register yourself as an I&AP for this project, and ensure that your comments, concerns and/or queries raised regarding the project will be noted.

Comments and queries on the project can be directed to

Mr Bjorn Hoffmann	PO Box 55, Pinetown, 3600		 Royal HaskoningDHV <i>Enhancing Society Together</i>
	Tel	031 719 5571	
Royal HaskoningDHV	Fax	031 719 5505	
	Email	bjorn.hoffmann@rhdhv.com	

ENVIRONMENTAL IMPACT ASSESSMENT PROCESS

**PROPOSED CONSTRUCTION OF A 3 KM PIPELINE AND ASSOCIATED
INFRASTRUCTURE ON PORTIONS 0 AND 5 OF FARM SAND DRAAI 391, NEAR
GROBLERSHOOP, NORTHERN CAPE**

BACKGROUND INFORMATION DOCUMENT

(September 2014)

DEA Reference: 14/12/16/3/3/1/1214

YOUR COMMENTS AND QUERIES ARE WELCOME

Please complete this Comment Form in full before and return to:

Mr Bjorn Hoffmann	PO Box 55, Pinetown, 3600		 <p>Royal HaskoningDHV Enhancing Society Together</p>
	Tel	031 719 5571	
Royal HaskoningDHV	Fax	031 719 5505	
	Email	bjorn.hoffmann@rhdhv.com	

Title (Prof/Mr/Mrs)	First name	
Surname		
Capacity (e.g. Secretary / Director)		
Organisation		
Postal address	Postal code	
Tel No. ()	Cell No.	
Fax No. ()	Email address	

What comments / concerns would you like to raise regarding this proposed project? (Please use additional pages, if required)

.....

.....

.....

PLEASE REGISTER THE FOLLOWING PERSON(S) ON THE PROJECT DATABASE:

Title (Prof/Mr/Mrs)	First name	
Surname		
Capacity (e.g. Secretary / Director)		
Organisation		
Postal address	Postal code	
Tel No. ()	Cell No.	
Fax No. ()	Email address	

Signature	
------------------	--

IF YOU PREFER **NOT TO RECEIVE** ANY FURTHER INFORMATION REGARDING THIS PROPOSED PROJECT, AND, WOULD PREFER TO BE REMOVED FROM THE PROJECT DATABASE, PLEASE TICK THE BOX BELOW AND RETURN THE FORM TO THE PUBLIC PARTICIPATION CONSULTANTS (CONTACT DETAILS AS PROVIDED ABOVE).

Yes, remove my name

PUBLIC PARTICIPATION REPORT

I&AP DATABASE

REGISTERED INTERESTED AND AFFECTED PARTY DATABASE

Last Name	First Name	Company	Address	Postal Code	City	Phone 1	Phone 2	Phone 3	Comments
Abbot	Henry	Northern Cape Dept. Water Affairs	Private Bag X5912	8800	UPINGTON	082-808-0471	054 338 5800		
Abercornie	Romeo		PO Box 007	8808	KALKSLOOT				
Abrahams	A	Northern Cape Dept. Water Affairs			KIMBERLEY	082-883-6741	083-830-8802		Abe@dwa.gov.za
Adams	P		Pampoens Street 26	8808	KALKSLOOT				
Adams	Cecil		Pampoens Street No. 26	8808	KALKSLOOT				
Adams	Magrieta		Zuma Square	8800	KALKSLOOT				
Ampie	Vlok	Plaas: Van Rooysvlei	PO Box 1263	8800	UPINGTON				
Andries	Yvonne		Pampoens Street 23	8808	KALKSLOOT				
Andries	Esau	Kalksloot Laerskool	PO Box 1420	8800	UPINGTON				
Ansie	Nel	Arrie se Put Guest House	PO Box 45	8874	AUGRABIES				
Aplos	Gertruida		Zuma Square	8800	KALKSLOOT				
April	Charl	Khara Hais Local Municipality	Private Bag X6003		UPINGTON	054-332-5911			
August	Elize		Pampoens Street 25	8808	KALKSLOOT				
Auret	Hennie	Khara Hais Local Municipality	Private Bag X6003	8800	UPINGTON	054-332-5911	083-455-1237		
Barend	Louw	Plaas: Wildekeur	PO Box 3023	8800	UPINGTON				

Barnis	Esmarelda	Airports Co SA Ltd	Private Bag X5936	8800	UPINGTON				
Basson	Petrus		House 97 Katoeno Street	8808	KALKSLOOT				
Basson	Theresa		Zuma Square		KALKSLOOT				
Beukes	Aubrey	NC Department of Social Services & Population Development	Private Bag X5892	8800	UPINGTON				
Beukes	Lizelle	Oranje Vaal Water Use Association	PO Box 314		DOUGLAS		083-453-9073		
Bezuiderrau de	Arma		84 Katell Street	8808	KALKSLOOT				
Blom	Hanno	Boegoebergd am Oord	PO Box 15	8850	GROBLERSH OOP				
Blom	Jakobus	Kheis Local Municipality	Private Bag X2		GROBLERSH OOP	054-833-9500	054-833-9509	083-677-0072	
Boer	Tehodia		Zuma Square	8800	KALKSLOOT				
Booyesen	Sanna		House 5		GROBLERSH OOP	074-250-2577			
Booyesen	Lero		House 25		GROBLERSH OOP	076-373-4166			
Booyesen	Mike	Siyanda District Municipality	Private Bag X6039	8800	UPINGTON				
Bosman	Gillian		39 Ertjie Street	8808	KALKSLOOT				
Bosman	Hans		House 507		GROBLERSH OOP	083-691-6506			
Bosman	Veronica		Pampoen	8808	KALKSLOOT				

			Street 13							
Bosman	Renaldo		9 Spanspek Street	8808	KALKSLOOT					
Botha	Johan	Boegoeberg Water Use Association	PO Box 15	8850	GROBLERSH OOP	054-841-0002	054-841-0000	082-651-8415	ceowua@boegoebergwater.co.za	
Bovu	Gundlani	Khara Hais Local Municipality	Private Bag X6003	8800	UPINGTON	054-332-5911	079-672-3484			
Brand	LFJ	Khara Hais Local Municipality	Private Bag X6003	8800	UPINGTON	054-332-3287				
Breytenbach	Naas	Sentech Ltd	88 Swartmodder Road PO Box 1207	8800	UPINGTON	054-332-6551				
Bruwer	Willie	Oranje Vaal Water Use Association	PO Box 314		DOUGLAS	053-298-2112				
Bulani		Northern Cape Dept. Roads & Public Works	PO Box 3132	8300	KIMBERLEY					
Burger	Buks	Boegoeberg Water Use Association	PO Box 22	8850	GROBLERSH OOP					
Burger	BF	Boegoeberg Water Use Association	PO Box 68	8850	GROBLERSH OOP					
Buys	Helena	Alstop Supermarket	Hoofstraat 10 PO Box 269	8850	GROBLERSH OOP	054-833-0393		076-887-8284		
Buys	Kobus	LAW Abattoir	PO Box 202	8850	GROBLERSH OOP					
Chris	Honiball,	Plaas: Bok Poort	PO Box 55	8850	GROBLERSH OOP					
Christa	Mouton,	SANRAL	Private Bag 5789	8800	Postnet 76					
Cloete	Sean	Dept. Water				054-	083-633-		CloeteS@dwa.gov.za	

		Affairs				338-5847	3642			
Cloete	Elizabeth	Roadslid	House 530		GROBLERSH OOP	078-456-4758				
Cloete	Kowa	Telma van wyk		8800	UPINGTON					
Cloete	G	Siyanda District Municipality	Private Bag X6039	8800	UPINGTON					
Cloette	Sandra	Councillor Grobblershoo p			GROBLERSH OOP	078-456-4758				
Coetzee	Maira		1207 Tamatie Street	8808	KALKSLOOT					
Coetzee	S	Siyanda District Municipality	Private Bag X6039	8800	UPINGTON					
Cronjé	Anri	Volksblad	64 Scott Street	8800	UPINGTON					
Dally	Trevor	Eskom	PO Box 500	8800	UPINGTON	054-337-1252	072-325-1655			
Daly	Neil	SANRAL	Private Bag X19	7535	BELVILLE	021-957-4623				
De Beer	Catrin	Green Kalahari Tourism Office	Private Bag X6039	8800	UPINGTON					
de Klerk	Anasha		Zuma Square	8800	UPINGTON	079-998-0720				
de Klerk	Liezel		Zuma Square	8800	KALKSLOOT	073-913-2526				
de Wee	DJ		56 Honey Suckle Street	8801	LOUISVALE WEG					

Derick	Strydom,	SANParks	Private Bag X1	8874	AUGRABIES					
Dieter	Holm,	Solar Energy Society of SA (SESSA)	PO Box 58	0126	HARTBEEPOORT					
Du Plessis	Pieter	Karstens Boerdery	PO Box 53	8806	KANONEILAND	082-491-9300	054-491-9352	082-557-9734		
Du Plessis	Jeremy	Khara Hais Local Municipality	Private Bag X6003	8800	UPINGTON	054-332-5911	082-399-2705			
Duiker	Magda	Julian Basson		8800	UPINGTON					
Eiman	Samuel		169 Lusern Street	8808	KALKSLOOT					
Engelbrecht	WJB	Khara Hais Local Municipality	Private Bag X6003	8800	UPINGTON	054-338-7002	054-338-7357	082-095-9225		
Engelbrecht	Japie	Orange River Farmes Union: Agri SA	PO Box 2383	8800	UPINGTON	054-337-6278	083-578-5626			
English	AH	Siyanda District Municipality	Private Bag X6039		UPINGTON					
Erasmus	Suzanne	WESSA	PO Box 316	8300	KIMBERLEY	053-839-2717	054-842-1433	082-849-7655	wessanc@yahoo.com	
Esau	Andries	Kalksloot Intermediere Skool	8 Druive Street	8800	KALKSLOOT					
Esterhuysen	Seppie	Department of Agriculture, Forestry and Fisheries (DAFF)	162 George Street Kimberley Building	8300	KIMBERLEY			082-559 1132	Seppie.esterhuysen@gmail.com	
Fisher	B	Northern Cape Department of Environment	224 Du Toit Span Road	8300	KIMBERLEY					bfisher@ncpg.gov.za

		and Nature Conservation								
Fourie	Johan	Landowner/ Farmer	Farm Sand Draai PO Box 720	8850	GROBLERSH OOP				wilcofourie@lantic.net	
Fourie	Lourens	Boegoeberg Water Use Association	PO Box 177	8850	GROBLERSH OOP					
Fourie	M	Boegoeberg Water Use Association	PO Box 38	8850	GROBLERSH OOP					
Fourie	Nico	Dept. Roads & Public Works	PO Box 3132	8301	KIMBERLEY	053- 839- 2260	083-451- 1046			
Fourie	Wilco	Adjacent Landowner / Farmer's son	Farm Sand Draai PO Box 720	8850	GROBLERSH OOP	054- 833- 0486	082-789- 6207	086-675- 1778	wilcofourie@lantic.net	
Galimberti	Mariagrazia	SAHRA								
Geldenduys	Conrad	Khara Hais Local Municipality	Private Bag X6003	8800	UPINGTON	054- 332- 5911	082-926- 3578			
Geldenhys	CW	Khara Hais Local Municipality	Private Bag X6003	8800	UPINGTON	054- 338- 7073	054-338- 7373	082-926- 3578		
Goussard	A	JCG Watertreatme nt	PO Box 2974	8800	UPINGTON	079- 767- 3535		086-524- 5410		
Gouws	Zelna		Zuma Square	8800	UPINGTON					
Grobler	Japie	Agri South Africa	PO Box 1508	0001	PRETORIA					
Groeners	Erna	Northern Cape Dept. Environmenta l Affairs & Nature Conservation	Private Bag X6102	8300	KIMBERLEY	053- 807- 4800				
Hasty	Robert	WESSA Northern	PO Box 10355	8315	BEACONSF ELD	083- 959-		053-842- 1966	robert.h@absamail.co .za	

		Cape				7048				
Hector	Magome,	SANParks	PO Box 787	0001	PRETORIA					
Hendricks	S		4 Klokkiesblo m Crescent	8801	UPINGTON					
Herman	Craywagen ,	Oranjerivier Wine Cellars	PO Box 544	8800	UPINGTON					
Hoffie	Joubert,	Oranje Kooperasie Beperk	PO Box 49	8800	UPINGTON					
Horak	Matthys	ATNS	PO Box 1810		JOHANNESB URG	011- 961- 0307		079-879- 3654		
India	Mongezi	Civial Aviation Authority	Private Bag X73	1685	HALFWAY HOUSE	011- 545- 1000				
Iscacs	Maria		Zuma Square	8800	KALKSLOOT					
Jacobs	Jane		House 70 Ertjie Street	8808	KALKSLOOT					
Jacobs	Davy	Kheis Local Municipality			GROBLERSH OOP	054- 833- 9510			davyj@kheis.co.za	
Jansen	Sarina	Kheis Local Municipality	PO Box 176	8850	GROBLERSH OOP	054- 833- 9500	083-330- 3605			
Jobson	Alfonso		19 Ertjie Street	8808	KALKSLOOT					
Jobson	Fransina		54 Ertjie Street	8801	KALKSLOOT	083- 660- 4367				
Johnson	Shaun	Sustainable Futures ZA	PO Box 749 Rondebosc h	7701	CAPE TOWN	086- 325- 9965	086-510- 2537			
Jonkens		Northern Cape Dept. Transport, Safety & Liaison	PO Box 1368	8300	KIMBERLEY					
Jors	Rosiena		Zuma	8800	KALKSLOOT					

			Square						
Joseph	JPI	Kheis Local Municipality	PO Box 176	8850	GROBLERSH OOP	054-833-9500	073-774-7427		
Juries	Ivan	Community Member	16 Spanspek Street, Kalksloot	8808	UPINGTON	054-338-7078	054-338-7351	082-827-9789	
Khakhane	David	Witsand Nature Reserve	PO Box 1474	8420	POSTMASBURG				
Klim	Estelle		House 70 Ertjie Street	8808	KALKSLOOT				
Kobus	van Zyl,	Siyanda District Municipality	Private Bag X6039	8800	UPINGTON				
Koloi	A	Councillor ANC Ward 11- Upington			UPINGTON	079-419-1774			
Koopman	Ariska		House 89		GROBLERSH OOP				
Koopman	H	Groblershoop Community Health Centre	PO Box 180	8850	GROBLERSH OOP				
Kordom	Randall		17 Kokerboom Street	8870	KAKAMAS				
Kordom	Tottie	DK Kerk	17 Kokerboom Street	8870	KAKAMAS				
Kotzee	Piet		13 Druwe Street	8808	KALKSLOOT				
Kotzee	Hendrick		868 Druwe Street	8800	UPINGTON				
Kubayi	Ernest	Northern Cape Dept. Water Affairs	Private Bag X5912	8800	UPINGTON	054-338-5800	082-888-3764		
Links	W		P/a Ntoi Crescent 100	8801	UPINGTON				

Louw	Andy	Standard Bank - Private Equity	2nd Floor, The Firs, Cnr of Bierman and Craddock Ave, Rosebank	2196	JOHANNESBURG	011-770-8347	083-631-6722			
Louw	Jaco		PO Box 82	8800	UPINGTON					
Lucas	Dave	Eskom - Sustainability (Corporate)	PO Box 1091	2000	JOHANNESBURG	011-800-2346				
Lucas	Sylvia	MEC for Environmental Affairs & Nature Conservation	Private Bag x6010	8300	KIMBERLEY	053-832-1022				
Ludick	Pietie	!Kheis Local Municipality	Private Bag X2	8850	GROBLERSHOOP	054-833-9500	079-974-7401			
Maasdorp	Joubert		House 75 Ertjie Street	8808	KALKSLOOT					
Maasdorp	Sara		1218 Tamatie Street	8808	KALKSLOOT					
Madlongwane		Northern Cape Dept. Education				054-337-6300				
Magang	Liezel		House 479		GROBLERSHOOP	072-854-6756				
Makatong	Klassie	Councillor ANC PR - Upington			UPINGTON	072-629-5367				
Makatong	Klasie K.	Khara Hais Local Municipality	Private Bag X6003	8800	UPINGTON					
Malan	Dirk	Kalahari Water	PO Box 575	8860	KEIMMOES					

Manager	Provincial	South African Heritage Resource Agency	1 Robb Street PO Box 1930	8301	KIMBERLEY	053-831-2537	053-833-1435			
Manong	Maloeiema ng	SAHRA	PO Box 1940	8301	KIMBERLEY	053-831-2537	082-494-6670			
Maraaia-Martin	Mora	Northern Cape Provincial Government	Private Bag X5016	8300	KIMBERLEY					
Marais	Peter	ATNS	PO Box 1810		JOHANNESBURG	011-961-0351				
Marais	Hennie	ATNS	PO Box 1810		JOHANNESBURG	011-961-0381				
Marais	Fanie	Boegoeberg Water Use Association	PO Box 303	8850	GROBLERSHOOP					
Matthys	Joey		34 Ertjie Street	8808	KALKSLOOT					
Mbangwa	Sibonelo	Northern Cape Dept. Environmental Affairs & Nature Conservation	Private Bag X6010	8300	KIMBERLEY					
Mfusi	Vernon	Khara Hais Local Municipality	Private Bag X6003	8800	UPINGTON	054-338-7082	054-338-7351	082-854-1328		
Migivies	Juliana		Zuma Square	8800	KALKSLOOT					
Minnies	Jadine		Zuma Square	8800	KALKSLOOT					
Mirooi	Magmeta		1166 Mielie Street	8808	KALKSLOOT					
Mjila	SZ	Siyand District Municipality -			UPINGTON					

		Executive								
Mooketsi		Northern Cape Dept. Social Development	Private Bag X6110	8300	KIMBERLEY					
Morkel	Abraham	Louisvale-Weg Opkomende Boere Vereniging	Honeysuckle Street No 7	8801	UPINGTON			082-820-3759		
Mostert	René	Die Plattelander	PO Box 217	8240	SPRINGBOK					
Mothibi	Dimakatso	Department of Agriculture, Forestry and Fisheries (DAFF)	162 George Street Kimberley Building	8300	KIMBERLEY	053-838 9102				
Mouton	Christina		Pampoen Street 7	8808	KALKSLOOT					
Mthiyane	Thabani	ATNS	PO Box 1810		JOHANNESBURG	011-961-0384				
Nakan	Maria		Zuma Square	8800	KALKSLOOT					
Nico	Theron,	Resident: Upington	PO Box 770	8800	UPINGTON					
Nortje	Dirk	Water User / Farmer	Farm Opwag PO Box 110	8850	GROBLERSHOOP	054-833-0709	082-820-8307	086-502-5536		
Nowalaza	Johannes	Northern Cape Dept. Education	65 Omega Street Private Bag X5029	8300	KIMBERLY			076-101-8829		
October	Mervin	Dept. Social Development (Siyanda District Municipality)	Private Bag 5892	8800	UPINGTON	054-339-9448	054-339-2349	082-592-9604		

Olyn	Hester		56 ErtjieStreet	8808	KALKSLOOT					
Olyn	Denzil D.		33 Gousblom Crescent	8801	UPINGTON					
Olyn	Shirley		33 Gousblom Crescent	8801	UPINGTON					
Oor	Emma		Zuma Square	8800	UPINGTON					
Padmaker	M		9 Botterblom Street	8801	UPINGTON					
Palm	Ruth	Head of Department Roads and Public Works	PO Box 3132	8301	KIMBERLEY	053- 839- 2241				
Palm	Ruth	Northern Cape Roads and Public Works	PO Box 3132	8301	KIMBERLY	053 839 2241				
Paul	Galpin,	ATNS	PO Box 1810	8800	JOHANNESB URG					
Phete	Andre	Northern Cape Dept. Co-operative Governance Human Settlement & Traditional Affairs			UPINGTON	072- 947- 0801				
Piet	van Schalkwyk,	Plaas: Olievenhouts Drif	PO Box 746	8800	UPINGTON					
Pieter	Van Zyl,	Plaas: Tsebe	PO Box 40	8850	GROBLERSH OOP					
Pieterse	Luzia		Zuma Square	8800	KALKSLOOT					
Plaaitjie	Bet		158 Lusern Street	8808	KALKSLOOT					

PM	Kotze, PM	Siyanda District Committee	Private Bag X6039	8800	UPINGTON					
Rantekane	Tumelo	Dept. Water Affairs				054-338-5895				
Rantekant	Dumelo	Northern Cape Dept. Water Affairs			UPINGTON	084-338-5895				
Rapatsa	Denise	Khara Hais Local Municipality	14 Leeukop Street	8801	UPINGTON					
Raymond	Brown,	Plaas: Tampansrus	PO Box 181	8850	GROBLERSH OOP					
Reiner	Gerhard,	ATNS	PO Box 1810	8800	JOHANNESBURG					
Riba	Ordain	Northern Cape Department of Environment and Nature Conservation	224 Du Toit Span Road	8300	KIMBERLEY					dwerth@ncpg.gov.za
Riman	Siena		29 Druwe Street	8808	KALKSLOOT					
Roets	Leon	Boegoeberg Water Use Association	PO Box 15	8850	GROBLERSH OOP					
Rooi	L			8800	UPINGTON					
Rooi	Wijill		House 111 Katoen Street	8808	KALKSLOOT					
Rooi	Andre		Zuma Square	8800	KALKSLOOT					
Rupping	FP	ZF Mgcaw District Municipality	Corner of Upington 26 & Dr. Nelson Mandela Drive	8300	KIMBERLEY	071 972 1122				fpr@zfm-dm.gov.za

Samson		Northern Cape Dept. Finance, Economic Development & Tourism	Private Bag X5045	8300	KIMBERLEY					
Sauls	Pieter		14 Spansper Street	8808	KALKSLOOT					
Schaffler	Jason	Nano Energy				011-888-8238	072-444-3445			
Schreuder	JH	Boegoeberg Water Use Association	PO Box 80	8850	GROBLERSH OOP					
Sebolani	Standright		House 1444	8808	KALKSLOOT					
September	Elnorin		Zuma Square	8800	KALKSLOOT					
September	Melissa	Trausere	1510 Druwe Street	8800	UPINGTON	073-358-7885				
September	Mervin	Community Member	10 Spanspek Street, Sesbrugge	8800	UPINGTON	054-491-3378		078-844-2172		
Shushu	Norman	Siyand District Municipality	Private Bag X5018	8300	KIMBERLEY	053-838-9100/9107				
Slinger	Gertruida		13 Druwe Street	8808	KALKSLOOT					
Slinges	Christina		13 Duiwe Street	8808	KALKSLOOT					
Slinges	Petronella		13 Duiwe Street	8808	KALKSLOOT					
Smit	Kobus	Agrimark	PO Box 52	8800	UPINGTON					
Smit	Christo	Northern Cape Dept. Water Affairs	PO Box 52	8800	UPINGTON					
Snyders	LJ	Northern			KIMBERLEY	082-	053-830-			

		Cape Dept. Water Affairs				809- 2306	8804			
Snyman	B		139 Mielie Street	8808	KALKSLOOT					
Snyman	Sarah		2 Mielie Street	8808	KALKSLOOT					
Solomon	Luke	Northern Cape Dept. Social Development	PO Box 5892	8800	UPINGTON	054- 337- 9409	082-856- 1269			
Speelman	Vicky		House 479		GROBLERSH OOP	072- 854- 6756				
Speelman	Sanna		40 Kerk Street		GROBLERSH OOP					
Speelman	Antonie		PO Box 200	8850	GROBLERSH OOP					
Stander	J.P.	ACSA - Upington International Airport			UPINGTOM	054- 833- 0709	082-820- 8307	086-502- 5536		
Steven	Smith,	SANParks	Private Bag X01	8874	AUGRABIES					
Swartland	Bradley	Northern Cape Dept. Co-operative Governance Human Settlement & Traditional Affairs	Private Bag X5005	8300	KIMBERLEY					
Swartz	Elizabeth	Deputy Chair ANC	1144 Piesang Street	8800	UPINGTON	073- 331- 7075				
Thukubi	Buitomelo	Department of Agriculture, Forestry and Fisheries (DAFF)	162 George Street Kimberley Building	8300	KIMBERLEY			082-559 1225		
Tieties	Amanda		Pampoens	8808	KALKSLOOT					

			Street No. 27						
Tieties	Alfred	Siyands District Municipality (Office of the Mayor - Manager)	Private Bag X6039	8800	UPINGTON	054-337-2800			
Towell	Joline	Northern Cape Dept. Water Affairs			UPINGTON	084-338-5889			
Tsuij	Helina	Alstop Supermarket	PO Box 269	8850	GROBLERSH OOP				
van der Westhuizen	Ronney	!Kheis Local Municipality	Private BagX2	8850	GROBLERSH OOP	054-833-9500	078-451-4414		
van Eck	W		PO Box 323	8850	GROBLERSH OOP	084-363-8461			
Van Heerden	DH	Northern Cape Department of Environment and Nature Conservation	224 Du Toit Span Road	8300	KIMBERLEY	053-807-7305			bvotes@ncpg.gov.za
van Jaarsveld	JD	Vastrap Weaponrange	PO Box 619	8800	UPINGTON	054-756-0001	054-756-0000		
van Niekerk	Albert Nicolaas	Boedery	PO Box 1831	8800	UPINGTON	054-335-1057	054-335-1057	082-578-5616	
van Niekerk	Albert	Klipkoppies Boedery	PO Box 1831	8800	UPINGTON				
van Niekerk	Chris	Northern Cape Dept. Agriculture, Land Reform and Rural Development	Private Bag X9	8559	JAN KEMPSDOR P				

van Oktziuzen	Janetta		157 Lusern Street	8808	KALKSLOOT				
van Sittert	Hugo		Potgieterstraat 17	8800	UPINGTON				
van Staden	D.		14 Wessels Street	8801	UPINGTON				
van Vuuren	Mariaan		Zuma Square	8800	KALKSLOOT				
van Wyk	M. M.		Private Bag X6039	8800	UPINGTON				
van Wyk	Katrina		1219 Tamatie Street	8808	KALKSLOOT				
Van Wyk	Pieter	Boegoeberg Water Use Association	PO Box 127	8850	GROBLERSH OOP				
van Wyk	Wessel	Thuru Lodge	PO Box 202	8850	GROBLERSH OOP				
van Zyl	Jannie	Jakkalsdans	PO Box 40	8850	GROBLERSH OOP				
van Zyl	Jan J.	Lutz & Van Zyl Landmeters	PO Box 515	8800	UPINGTON				
van Zyl	Deon	Lutz & Van Zyl Surveyors	PO Box 515	8800	UPINGTON				
van Zyl	Irme	Private	PO Box 567	8801	UPINGTON	086-624-0306	072-222-6194		
van Zyl	PJC	Tsebe Boerdery	PO Box 40	8850	GROBLERSH OOP				
Visagie	L		Zuma Square	8800	KALKSLOOT				
Vog	George		PO Box 135	8850	GROBLERSH OOP				
Willemse	S. S.		Private Bag X6039	8800	UPINGTON				
Willemse	Samie	Tsantsabang Municipality	PO Box 716	8420	POSTMASBURG				
Zola	Ndimande	Solarzone	10 Van Riebeck Street	7140	STRAND				

	Anga					054-331-1155				
	Lucas		Zuma Square	8800	KALKSLOOT					

PUBLIC PARTICIPATION REPORT

ISSUES TRAIL

PUBLIC PARTICIPATION REPORT

PROOF OF CORRESPONDENCE

(See Appendix E3)

